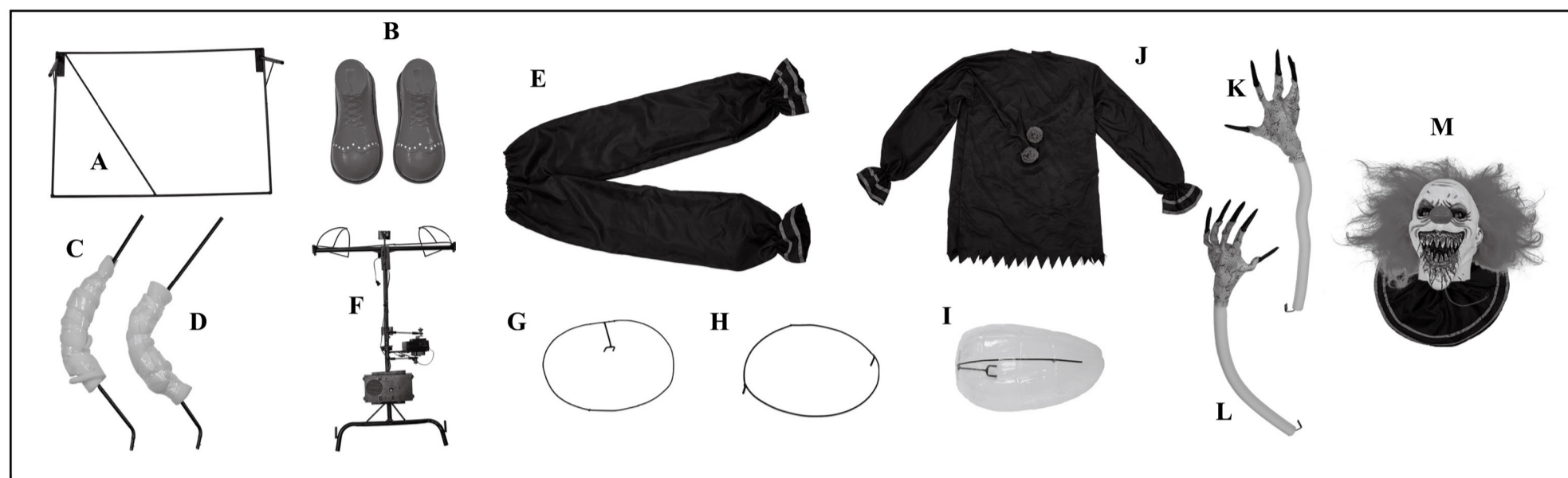


SPIRIT CROUCHY

Installation and Operating Instructions

Keep all plastic and wire parts away from children.

WARNING: DO NOT TURN ON THE PROP UNTIL FULLY ASSEMBLED. STAY CLEAR OF THE PROP WHILE OPERATING.

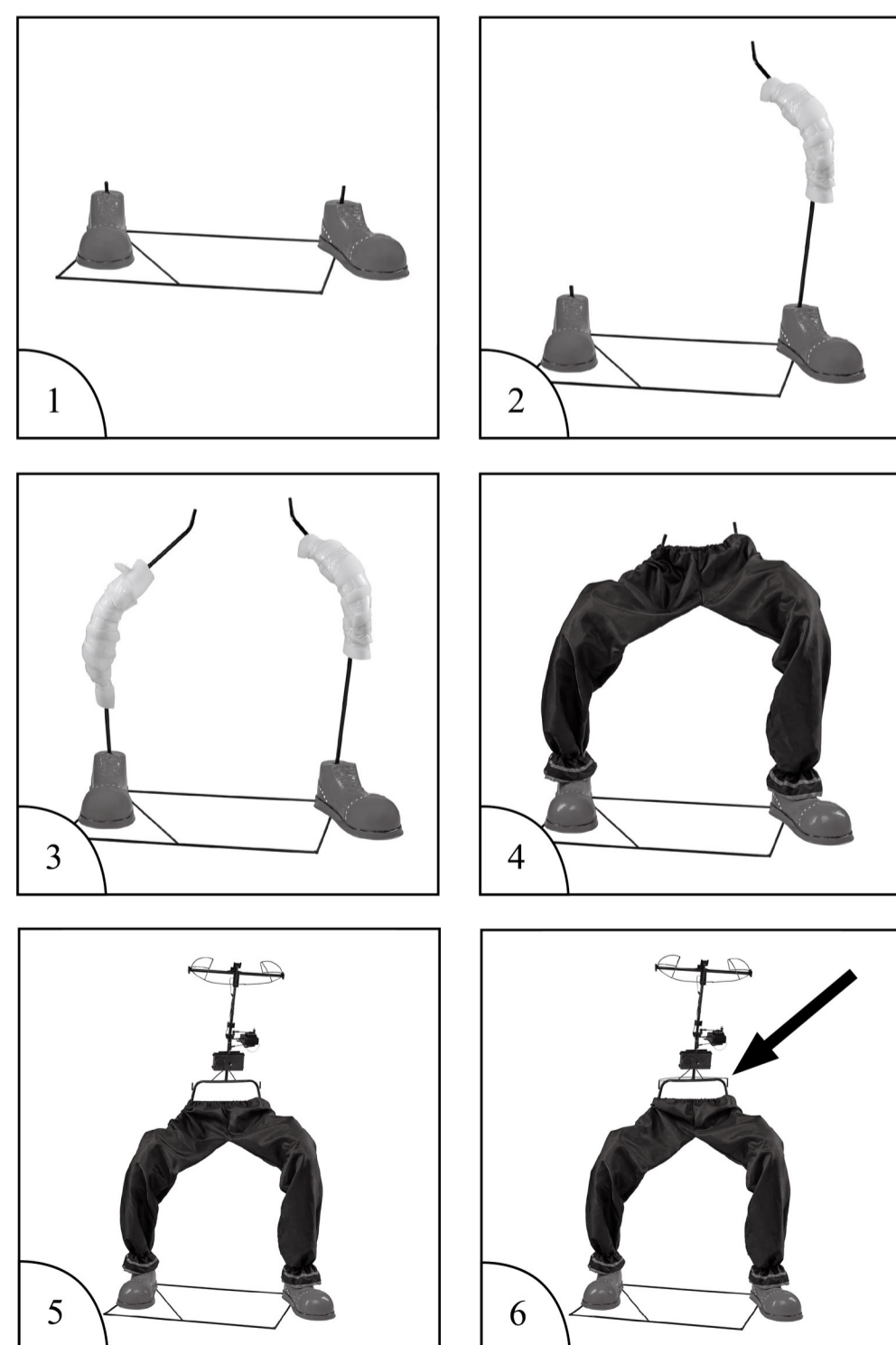


PARTS:

- | | | |
|--------------------------|--|---------------------------------|
| A: Base | E: Pants | J: Shirt |
| B: Shoes | F: Torso frame with control box | K: Right arm |
| C: Right leg pole | G: Chest hoop | L: Left arm |
| D: Left leg pole | H: Hip hoop | M: Head with Neck Collar |
| | I: Plastic back form | |

Assembly:

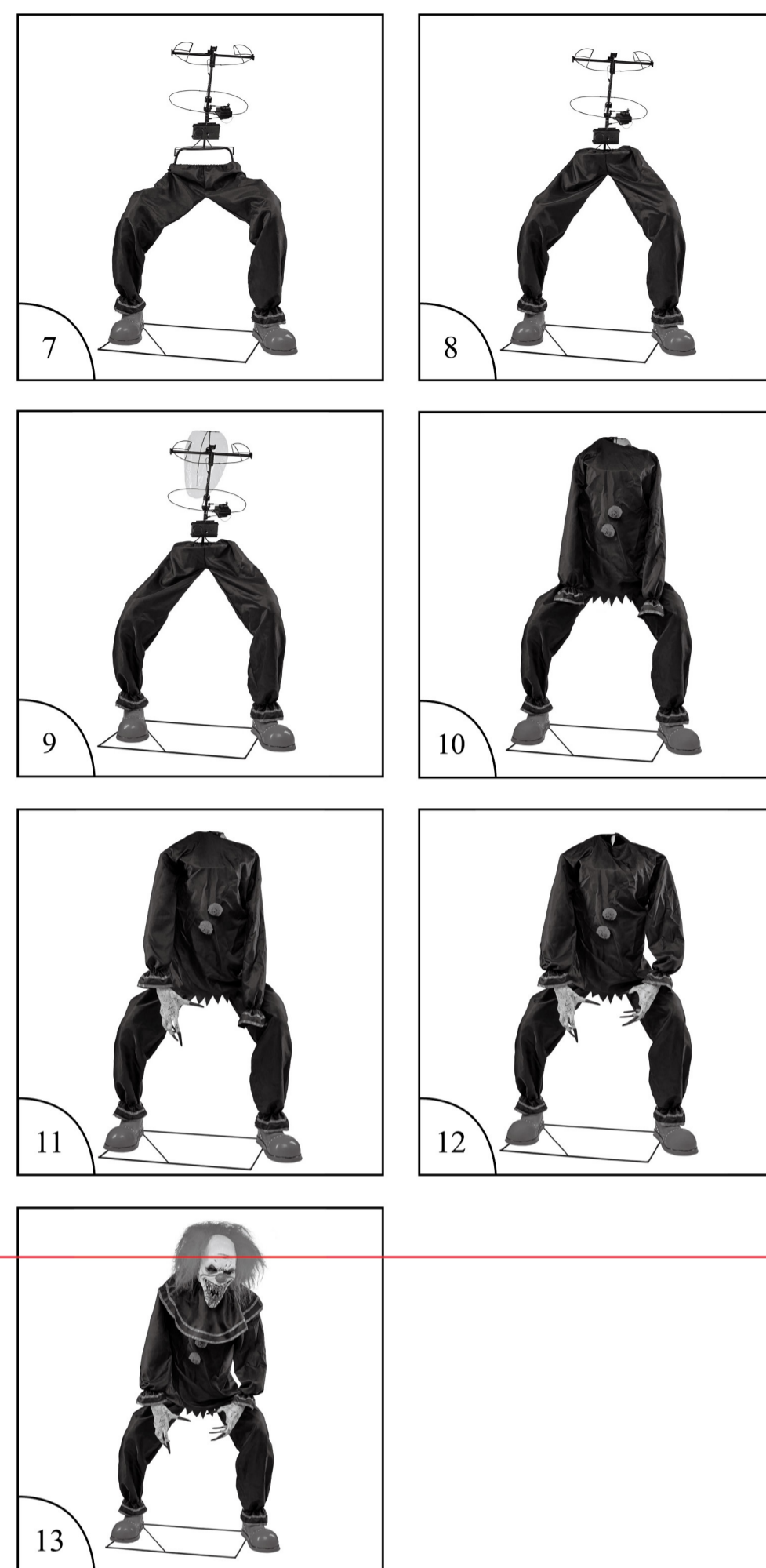
- Place one shoe (Part B) over each of the leg pole mounts located on the base (Part A). See Fig. 1.
- Insert right leg pole (Part C) into the leg pole mount on the right side of the base (Part A). Spring pins will lock into place. See Fig. 2.
- Insert the left leg pole (Part D) into leg pole mount located on the left side of the base (Part A). Spring pins will lock into place. See Fig. 3.
- Slide the legs of the pants (Part E) over the leg poles (Parts C and D) one at a time. See Fig. 4.
- Insert the torso frame with control box (Part F) into the tops of the leg poles (Parts C and D). Spring pins will lock into place. See Fig. 5.
- Insert the hip hoop (Part H) into the mounting brackets located at the bottom of the torso frame with control box (Part F). See Fig. 6.
- Insert the chest hoop (Part G) into the mounting brackets located in the upper middle of the torso frame with control box (Part F). See Fig. 7.
- Pull the pants (Part E) up and over the hip hoop (Part H). See Fig. 8.
- Insert the plastic back form (Part I) into the mounting bracket located on the upper back of the torso frame with control box (Part F). See Fig. 9.



- Place the shirt (Part J) over the torso frame with control box (Part F). See Fig. 10.
- Thread the right arm (Part K) through the right sleeve of the shirt (Part J) and insert into the mounting brackets located on the right side of the torso (Part F). See Fig. 11.
- Thread the left arm (Part L) through the left sleeve of the shirt (Part J) and insert into the mounting brackets located on the left side of the torso (Part F). See Fig. 12.
- Insert the head with neck collar (Part M) into the mounting bracket located at the top of the torso (Part F). Insert the wire attached to the head with neck collar (Part M) into the matching wire attached to the control box. See Fig. 13.

IMPORTANT INFORMATION:

- The infrared sensor distance and ambient temperature are directly related. When the body temperature (98.6° F) is different to the ambient air temperature, the infrared sensor distance will be farther. When the body temperature (98.6° F) is close to the ambient air temperature, the infrared sensor distance will be shorter.
- Do not use this item in an environment where air currents are caused by a window, air conditioning, or air outlet.
- Do not have the infrared sensor face a direct source of heat such as a heater.

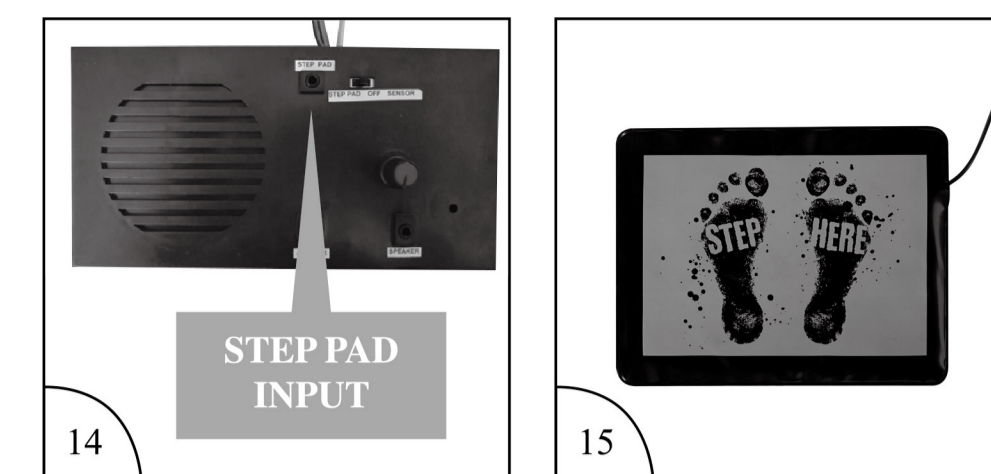


OPTIONAL STEP PAD SETUP

Follow steps 1 through 13 on the installation instructions first, then:

- Connect the wire from the optional Step Pad to the jack labeled "STEP PAD" on the control box. See Fig. 14.
- Step on the Step Pad to activate the prop. See Fig. 15.

Step Pad (SKU #01181288) is sold separately and can be purchased in-store and online at www.SpiritHalloween.com

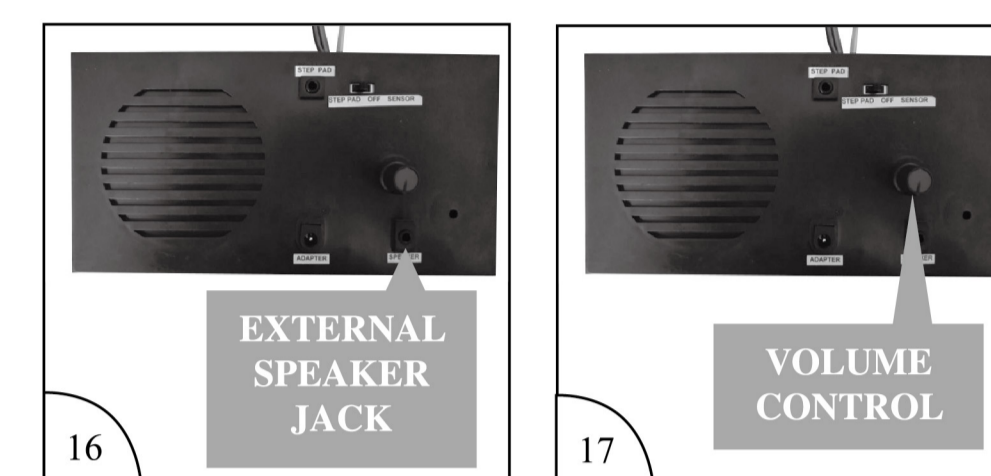


OPTIONAL EXTERNAL SPEAKER SETUP

This prop can be played through an external speaker (sold separately). To use this feature, follow steps 1 through 13 on the installation instructions first, then:

- Connect the wire from your external speaker to the jack labeled "SPEAKER" on the control box. See Fig. 16.
- Adjust the volume level to suit. See Fig. 17.

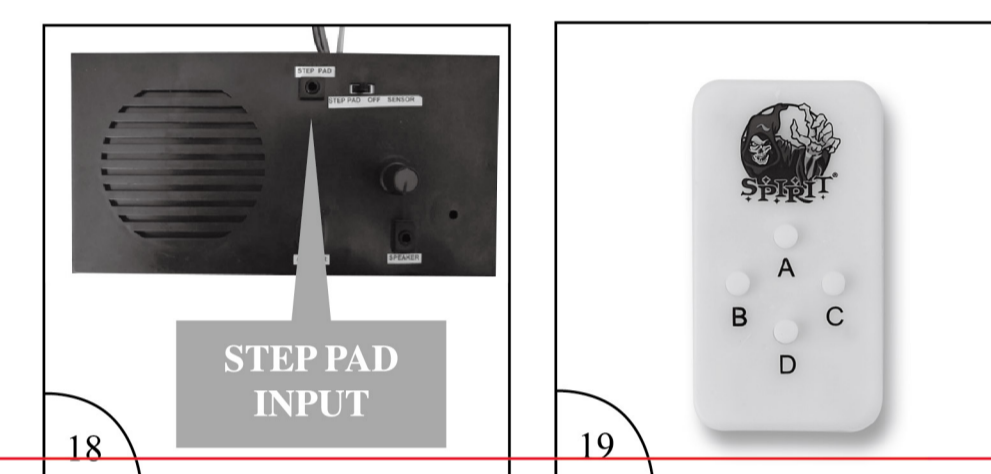
Note: Use external speakers with an impedance of 8 ohms only.



OPTIONAL MULTI-PROP REMOTE SETUP

Follow steps 1 through 13 on the installation instructions first, then:

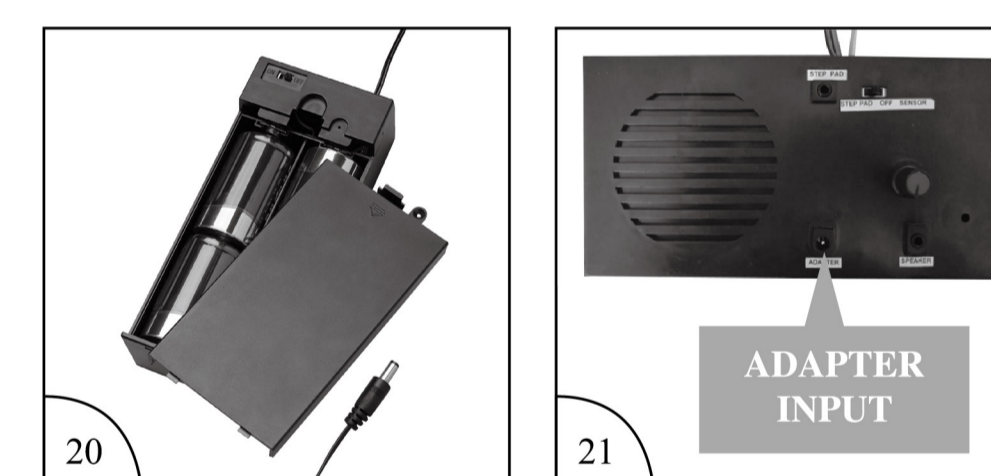
- Connect one of the transponders to the prop by inserting the wire of the transponder into either the Try Me or Step Pad jack as labeled on the control box. See Fig. 18.
- Flip the switch on the transponder to the ON position.
- Click the button on the Multi-Prop Remote that matches letter on the transponder to activate the prop. See Fig. 19.



OPTIONAL BATTERY ADAPTER SETUP

Follow steps 1 through 13 on the installation instructions first, then:

- Install 4 D Batteries into Spirit Battery Adapter. See Fig. 20.
- Connect wire from Spirit Battery Adapter to the 5.9V2A adapter port on the control box. See Fig. 21.
- Turn switch on Battery Adapter to the ON position to power the prop.



BATTERY INSTALLATION

Battery installation should be performed by an adult.

- Use only batteries recommended in the instructions.
- Do not mix old and new batteries.
- Do not mix alkaline, rechargeable, standard, or different types of batteries.
- Be mindful to insert batteries with correct polarity as indicated.
- Remove all exhausted batteries.
- Rechargeable batteries are only to be charged under adult supervision.
- Rechargeable batteries are to be removed from toy before being charged.
- Non-rechargeable batteries are not to be recharged.
- The supply terminals are not to be short-circuited.

WARNINGS:

- This product is designed for indoor or covered porch use only, and should not be placed outdoors subject to the weather.
- This item is not a toy. For decoration only.
- Choking hazard due to small parts.
- Keep all plastic and wire parts away from children.
- This product is intended for use by persons 15 years of age and older. Not intended for use by children ages 14 and under.

STOP DO NOT RETURN THIS ITEM TO THE STORE!
If experiencing technical difficulties, please email: DrZombie@spirithalloween.com, or call 1-866-586-0155 or go to SpiritHalloween.com for assistance.

SPIRIT
SPIRITHALLOWEEN.COM

Distributed by
Spirit Halloween
6826 Black Horse Pike
Egg Harbor Township, NJ
08234-4197
MADE IN CHINA

279 mm

432 mm