

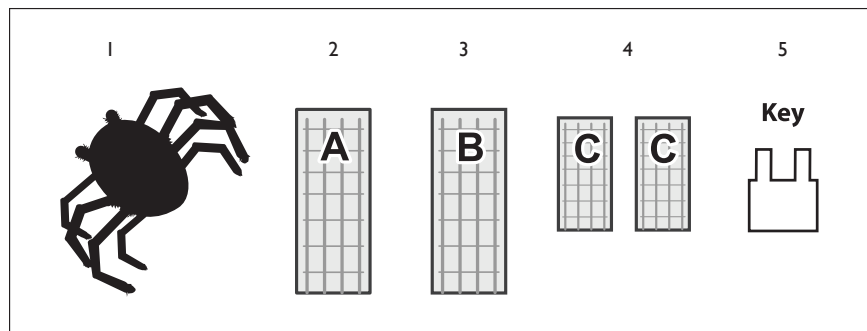
# Black Jumping Spider™

## Installation and Operating Instructions

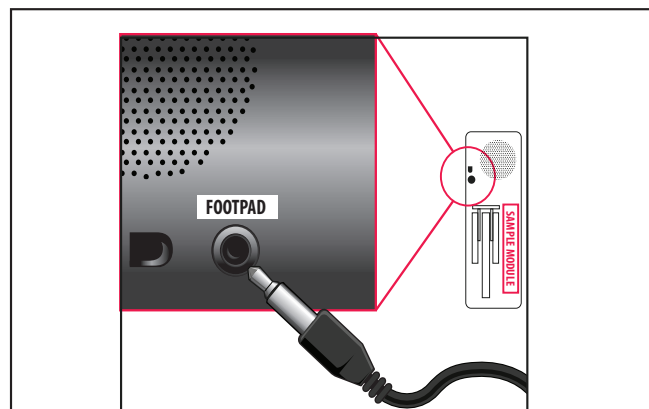
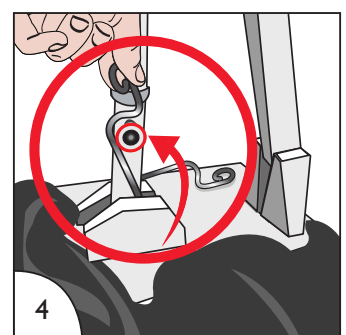
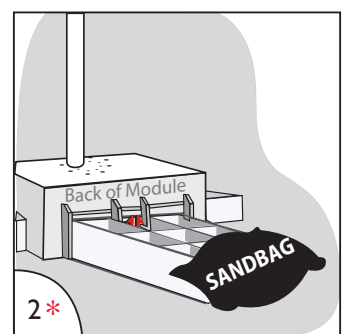
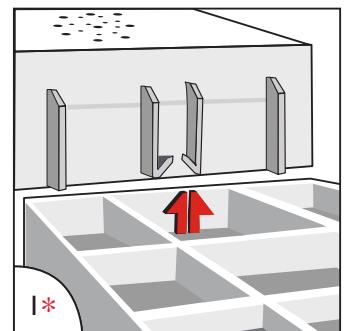
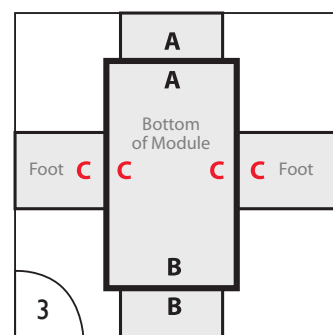
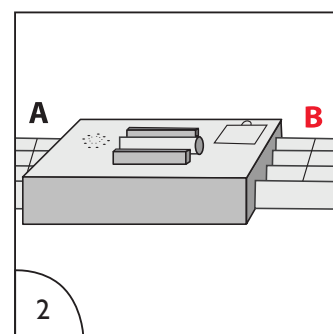
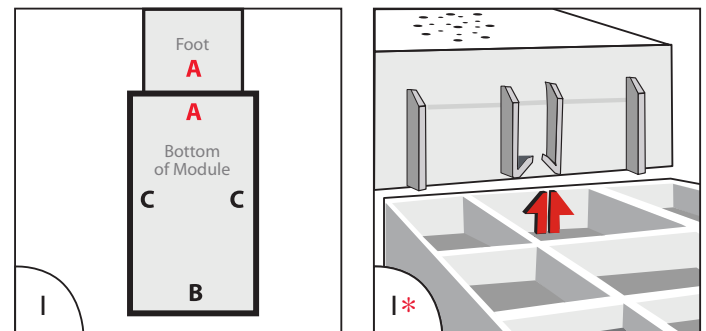
Keep all plastic and wire parts away from children.

### Parts

1. **MODULE WITH SPIDER**
2. **FRONT FOOT**
3. **BACK FOOT**
4. **SIDE FEET**
5. **FOOT REMOVAL "KEY"**



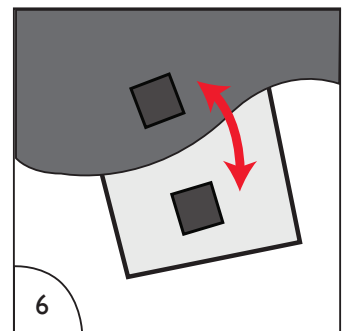
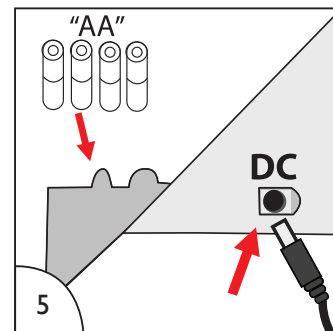
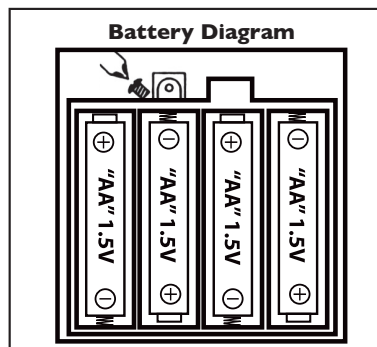
1. Insert FRONT FOOT into bottom of MODULE WITH SPIDER until it locks into place. (Match A to A)  
\* Note: Press to make sure each FOOT is flush with rectangular base. To remove FOOT, insert plastic "KEY" (included) into holes on bottom to release locks, twist and pull.
2. Insert BACK FOOT into bottom of MODULE WITH SPIDER until it locks into place. (Match B to B)  
Note: Place weight on FOOT to increase stability. (See illustration 2 )
3. Insert SIDE FEET into bottom of MODULE WITH SPIDER until they lock into place. (Match C to C)
4. **\*IMPORTANT\*** Lift SPIDER wrapped in fabric until poles are vertical. Attach the 2 metal springs by pulling each spring backward and securing them to the posts located on either side of the pole on MODULE WITH SPIDER.
5. Insert 4 AA alkaline batteries into the battery compartment located on the top of the MODULE or connect the DC adapter. (Sold separately)  
Note: Make sure there are no obstructions to hinder the Spider's movement. Turn switch on top of MODULE to ON to operate in sound and motion activation mode. Make a loud sound (clap) or move in front of the item to activate. Leave switch in OFF position when not in use.
6. Release tie holding fabric and attach hook and loop fasteners under fabric to the opposite hook and loop fasteners located on all four feet.
7. Spread out fabric and pose legs as desired.



### Optional Footpad Setup

Follow steps #1 through 5 on initial installation first.

1. Connect the cable from the optional footpad to the jack labeled FOOTPAD located on the MODULE.
  2. Place the switch on the MODULE into the 'FOOTPAD' position to enable FOOTPAD activation.
  3. Step on FOOTPAD to activate the scary sequence.  
(go to instruction #6 to continue setup)
- \*Footpads are sold separately and can be purchased at [www.spirithalloween.com](http://www.spirithalloween.com)



### Battery Instructions and Cautions

• Use only the batteries recommended by the manufacturer. • Remove batteries when not in use. • Do NOT use rechargeable batteries. • Be sure to insert the batteries with the correct polarity +/- . • Never mix different types of batteries: old and new, carbon-zinc, alkaline, nickel-cadmium or rechargeable. • Always dispose of exhausted batteries properly. Do NOT dispose of batteries in fire, they may leak or explode. ADULT SUPERVISION RECOMMENDED WHEN CHANGING BATTERIES.

**Warning! This item is not a toy. For decoration only. Small parts, choking hazard. This product is intended for use by persons 15 years of age and older. Not intended for use by children ages 14 and under.**

**WARNING**  
**DO NOT TURN ITEM ON UNTIL YOU HAVE COMPLETELY FINISHED ASSEMBLY. STAY CLEAR OF ITEM WHILE OPERATING. DO NOT PLACE ITEM ON UNEVEN GROUND. DO NOT PLACE WEIGHT ON ITEM WHILE IN OPERATION.**  
**\*\*FOR INDOOR USE ONLY\*\***

### DO NOT RETURN THIS ITEM TO THE STORE!

If experiencing technical difficulties, please email: [JackTheReaper@spirithalloween.com](mailto:JackTheReaper@spirithalloween.com), or call 1-866-586-0155 or go to [SpiritHalloween.com](http://SpiritHalloween.com) for assistance.

Requires 4 'AA' Batteries or optional DC adapter (6V 2A)  
ALL NEW MATERIALS: PLASTIC, WIRE, POLYESTER FIBRES  
**Surface washable only.**

### Trouble Shooting Steps

- If you hear a constant clicking sound and the item does not function properly, it means there is an obstruction preventing the item from operating (rock, bush, incline, etc.). Remove the obstruction and the item should function normally.
- Make sure the springs are attached. See illustration 4.
- If item is stuck in up or down position: 1. Turn the item OFF. 2. Unattach the springs from the module. 3. Turn the item ON and activate for 1 full cycle. 5. Turn the item OFF, reattach the springs and turn the item back ON.
- Motion Sensor – make sure that the motion sensor on SPIDER'S head is facing forward and there are no obstructions blocking sensor tube. To test the motion sensor, shine a flashlight into the tube.



PATENT 8,602,836



[SPIRITHALLOWEEN.COM](http://SPIRITHALLOWEEN.COM)

Distributed by  
Spirit Halloween  
6826 Black Horse Pike  
Egg Harbor Township, NJ  
08234-4197  
Made in CHINA